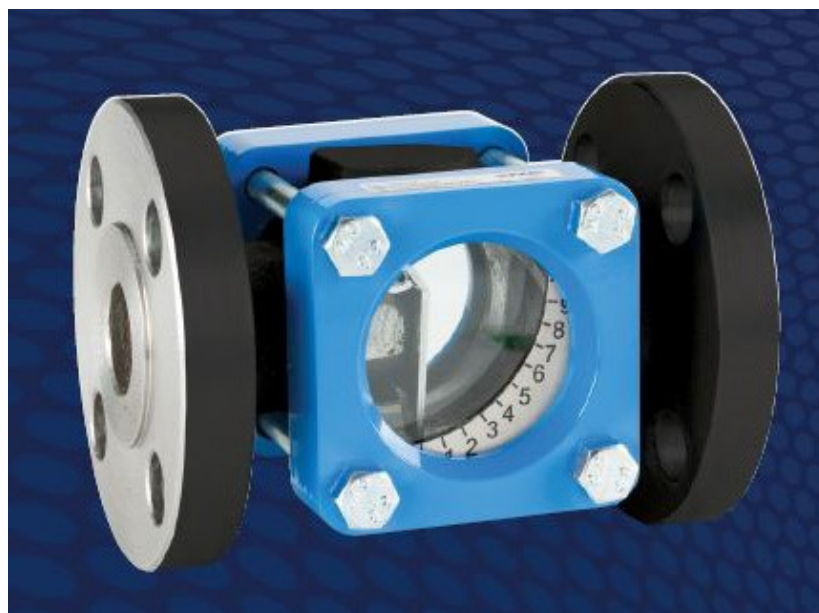


Fig.914 Cast Iron Steel Straight Through Sight Flow Indicator with Flap and Scale

The Fig.914 sight flow indicator is a variant of the Fig.913, incorporating a stainless steel flap and scale plate, which has a scale reading from 1 to 10. The flap is hinged in place above the internal drip spout. As liquid flows through the unit the flap is forced to move through an arc.

Features & Benefits

- The large viewing area allows the flow, colour and condition of the liquid to be observed, enabling the monitoring of product quality and consistency.
- The position of the flap in relation to the graduated scale-plate, indicates changes of the rate of flow of a liquid in a pipeline, from a drip to full flow conditions.
- The internal stainless steel flap is electro polished to improve viewing in murky liquids. The Fig.914 is suitable for both horizontal and vertical upward flows.



Temperature Ratings

	Temperature
Max Pressure 16 Bar	0°C to 180°C

Dimensions

Screw (mm)	Length A (mm)	Max Height From Centre B (mm)	Max Width C (mm)	Weight (kg)
25	140	38	94	3.5
40	180	45	120	6.5
50	220	56	135	10.5
80	260	86	186	20.5
100	310	94	224	35.5



BE® Bonut Engineering Ltd

Unit 12 Latham Close, Bredbury Industrial Park
Stockport, Cheshire, SK6 2SD, United Kingdom
Tel: +44 (0) 161 430 4000 Fax: +44 (0) 161 494 1461
Email: sales@bonut.co.uk Website: www.bonut.co.uk

Rev 1

DEREVE®
brownall®
RHODES®

Materials of Construction

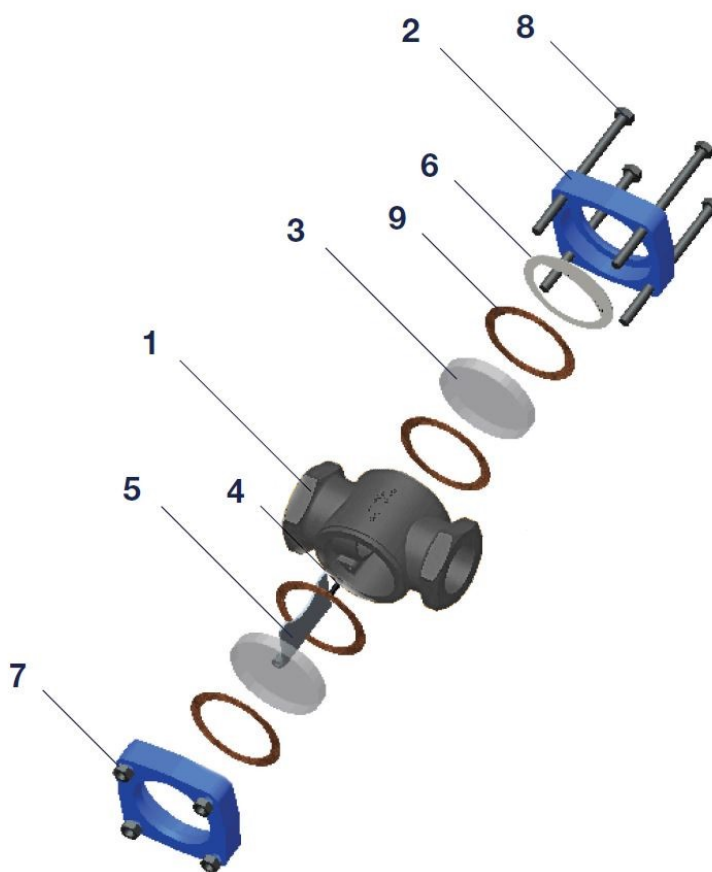
Item No.	Description	Body Material	Material	Qty
1	Body	Cast Iron	BS EN 1561 EN-GJL-250	1
2	Cover	Mild Steel	BS EN 10025 S355 J2G3	2
3	Glass Disc	Toughened Soda Lime	BS3463 (Standard)	2
		Toughened Borosilicate	DIN 7080 (Optional)	
4	Pin	Spring Steel		2
5	Flap	Stainless Steel		1
6	Scale Plate	Aluminium		2
7	Nut	Mild Steel Zinc Plated (Quantity depends on size)		4
8	Bolt	Mild Steel Zinc Plated (Quantity depends on size)		4
9	Gasket	Nickel Reinforced Graphite (Standard)		4
		PTFE (Optional)		

End Connections

Screwed

- ANSI 150RF
- ANSI 150FF
- PN16 BS EN 1092
- Table D BS10
- Table E BS10
- Table F

N.B. Fig 914 is not available with screwed ends



Certificate Number 9027
ISO 9001
ISO 14001

Every effort has been made to ensure that the information contained in this publication is accurate at the time of publishing. Bonut Engineering assumes no responsibility or liability for typographical errors or omissions or for any misinterpretation of the information within the publication and reserves the right to change without notice.



BE® Bonut Engineering Ltd

Unit 12 Latham Close, Bredbury Industrial Park
Stockport, Cheshire, SK6 2SD, United Kingdom

Tel: +44 (0) 161 430 4000
Email: sales@bonut.co.uk

Fax: +44 (0) 161 494 1461
Website: www.bonut.co.uk

**DEREVE®
brownall®
RHODES®**

Rev 1